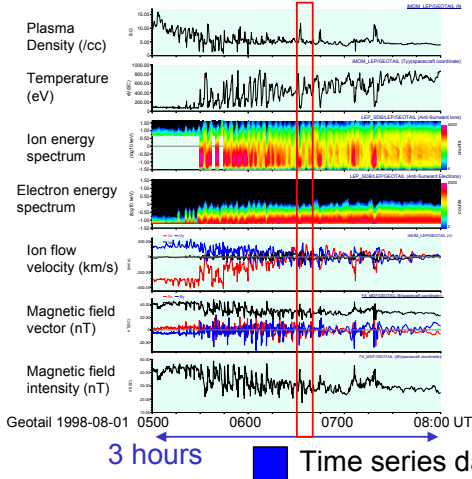


4.2.3 GEOTAIL, CLUSTER, & CEF

GEOTAIL

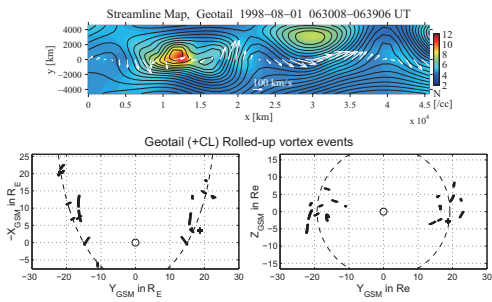
– In-depth and long-period observations of Earth’s magnetosphere

In situ measurements of particles, magnetic & electric fields, and waves



3 hours Time series data

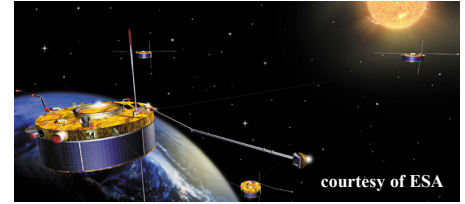
2D image of plasma structures (vortices)



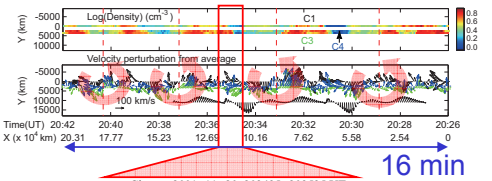
Large-scale vortices—an agent for plasma transport/mixing—identified from more than 10 years of GEOTAIL observations

CLUSTER

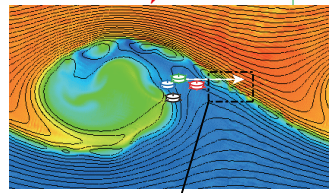
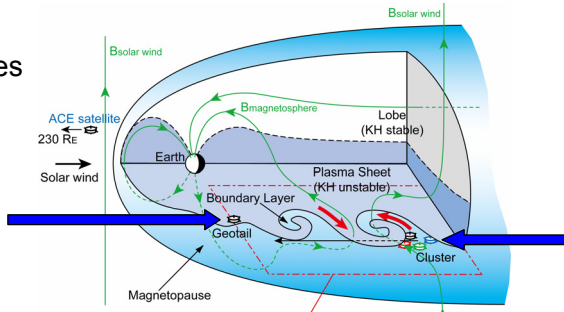
– Capture by four spacecraft of spatio-temporal evolution of the magnetosphere



Capture of the spatial structure of the magnetopause boundary layer

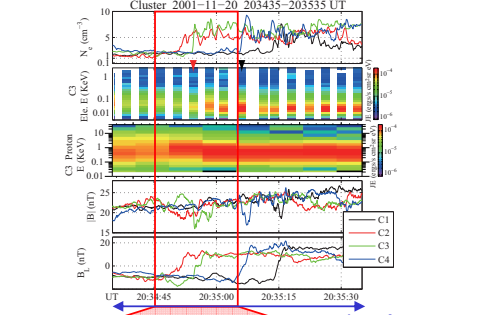
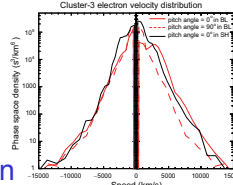


16 min



Understanding the transport/mixing process of collisionless plasmas from the multi-scale coupling viewpoint – Toward the next generation “Cross-Scale” mission

Electron acceleration



1 min

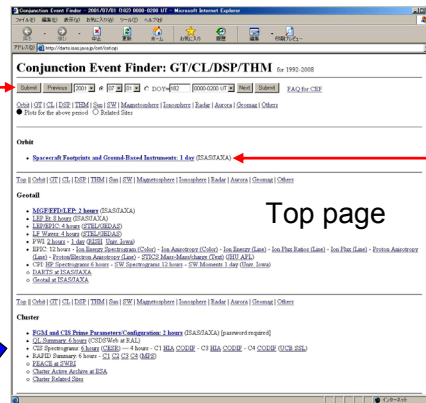


20 sec Reconnection jet

Conjunction Event Finder (CEF)

– Powerful tool for browsing various Quick Look data in Solar-Terrestrial Physics

1. Input “date” and “time interval”
2. Links to various Quick Look plots are generated.
3. One can inspect solar wind, magnetospheric, ionospheric, and ground data, taken by various satellites and ground observatories, for the selected interval.



URL: <http://darts.isas.jaxa.jp/stp/cef/cef.cgi>

Orbits and ionospheric footprints of satellites (incl. predicted ones) and field-of-view of ground observatories, to help search for conjugate events

